

SIDANA INSTITUTE OF EDUCATION
 VILLAGE KHALA KHURD, SUB-TEHSIL LOPOKE,
 TEHSIL AJNALA & DISTT-AMRITSAR.

BUILDING PLAN OF SIDANA INSTITUTE OF EDUCATION BUILT ON KHASRA
 NO. 2/1/16/2 (1K-2M), 2/1/25/1/2 (4K-12M), 3/1/20 (4K-9M), 3/1/21 (8K-0M) &
 3/1/22 (8K-17M)

DETAIL OF COVERED AREA - (GROUND FLOOR)

- COVERED AREA-(GROUND FLOOR) - 10491 SQFT OR 975 SQMTRS
- COVERED AREA-(FIRST FLOOR) - 9015 SQFT OR 832.82 SQMTRS
- COVERED AREA-(SECOND FLOOR) - 6648 SQFT OR 618.27 SQMTRS
- COVERED AREA-(MUMTY FLOOR) - 299 SQFT OR 27.77 SQMTRS

TOTAL COVERED AREA - (ALL FLOORS) - 26,350 SQFT

OR 2927.78 SQYDS OR 2448.88 SQMTRS

Sarjot सरजोत,
 गुरुम पੰसाटिउ, धਿਆਲਾ ਖੁਰਦ,
 ਬਲਾਕ ਚੋਗਾਵਾਂ (ਅੰਮ੍ਰਿਤਸਰ)

M.F.
 Designer:
 Sidana Educational & Welfare Society,
 Road No. 38-B, Rani Ka Bagh,
 Amritsar.

TITLE OF DRAWING - BUILDING PLAN

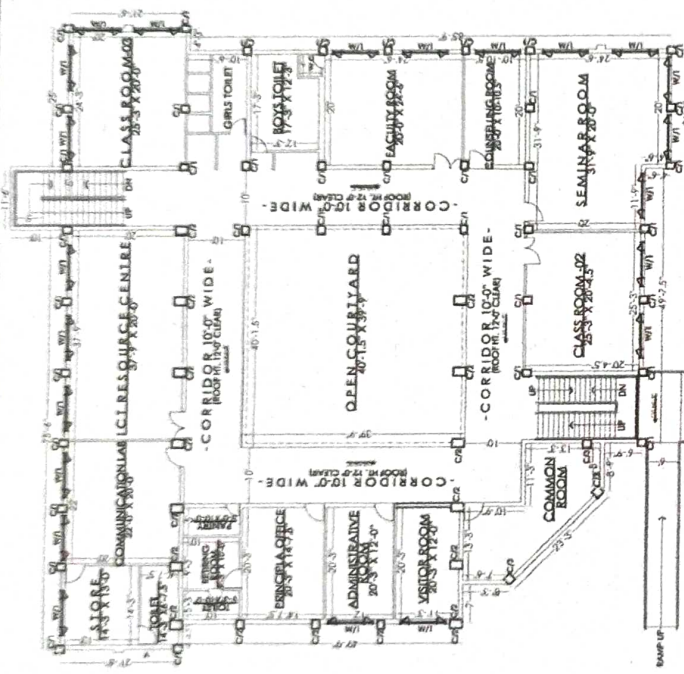
DWG. NO. AS/1

SCALE - 1/8" = 1'-0"

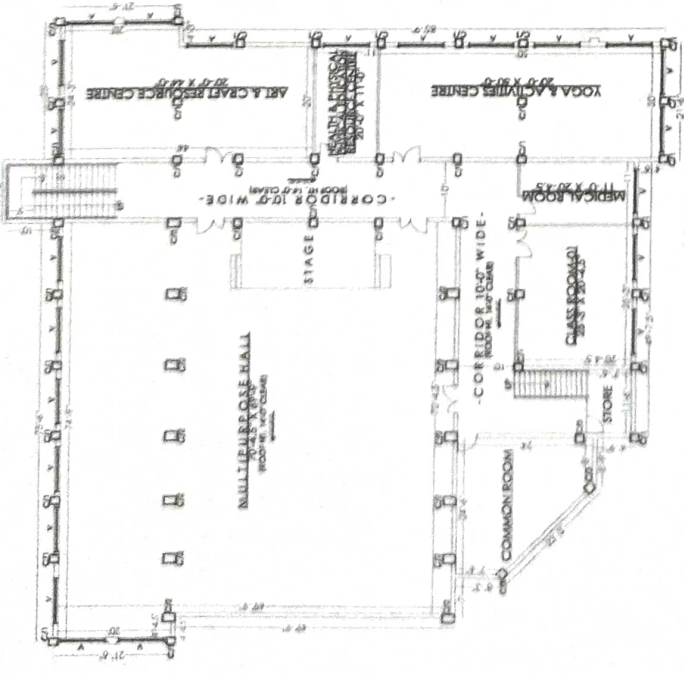
DATE - 15/05/2017

DIRECTION

NORTH



FIRST FLOOR PLAN



GROUND FLOOR PLAN



SECOND FLOOR PLAN